



WESTFIRE

FIRE EQUIPMENT & SAFETY SUPPLIES

HANGERS



F10693
Red Hanger W/ 2 Rubber Cords (Q301)
for 7" - 8" Dia. Fire Extinguisher

F10692
Red Hanger W/ 2 Rubber Cords (Q300)
for 4-1/4" - 6-1/4" Dia. Fire Extinguisher

F10691
Red Hanger W/ 2
Rubber Cords (Q300)
for 3" - 4" Dia.
Fire Extinguisher



F1069
Red Strap on Hanger
for 5 lb. Fire Extinguisher



F10695
Red Hanger for
2-1/2 lb. Fire Extinguisher



F10696
Red Hanger for
5 lb. Fire Extinguisher



Q300
Small Cord



Q301
Large Cord



F10711
Black Wall Hanger
for 7" Dia.
Fire Extinguisher



F10731
Black Wall Hanger
for 5" Dia.
Fire Extinguisher



F10712
Black Wall Hanger
for 4-1/4"-4-1/2" Dia.
Fire Extinguisher

HANGERS	2-3
BRACKETS, CHEMICAL GAUGES	4
TAGS, STICKER, COVERS	5
REPLACEMENT BANDS & CLIPS	6
CABINETS	7
RUBBER & BRUSHES, HORNS	8
SERVICE COLLARS, FOIL NOZZLE SEALS, PULL PINS, MISCELLANEOUS	9
PULL STATION GUARDS	10
AIR BLOW GUN KITS	11
VALVE STEMS, STROBE LIGHTS, WHEEL, VALVE GUARD, FUSIBLE LINK BRACKETS	12
CHROME ZIP TIES, TAMPER SEALS	13
ORDER FORM	14

BRACKETS

F1045
Spring Clip Bracket
for 2-1/2 lb., 2-3/4 lb. DC Units



F1046
Spring Clip Bracket
for 5 lb., 6 lb. DC Units



F1072
UNIVERSAL
for 5 lb.



F1071
UNIVERSAL
for 10 lb. - 15 lb.



F1070
UNIVERSAL
for 20 lb.



F1073
UNIVERSAL
for 5 lb. - 13 lb.



F1074
UNIVERSAL
for 5 lb. - 6 lb.



CHEMICAL GAUGES

F1047
Chemical Gauge
WET



F1048
Chemical Gauge
DRY



F1089
Plastic Inspection Record
Yellow 4 year (JAN-DEC)

F1088
Plastic Inspection Tag
Yellow (JAN-DEC)

F1080
Sign Fire Extinguisher Arrow
Vinyl Self-Adhesive

F1077
COVER for Fire Extinguisher
SMALL Red Vinyl - 20" H x 12" W
Velcro® Strap on Back

F1078
COVER for Fire Extinguisher
MEDIUM Red Vinyl - 25" H x 17" W
Velcro® Strap on Back

F1079
COVER for Fire Extinguisher
LARGE Red Vinyl - 31" H x 17" W
Velcro® Strap on Back

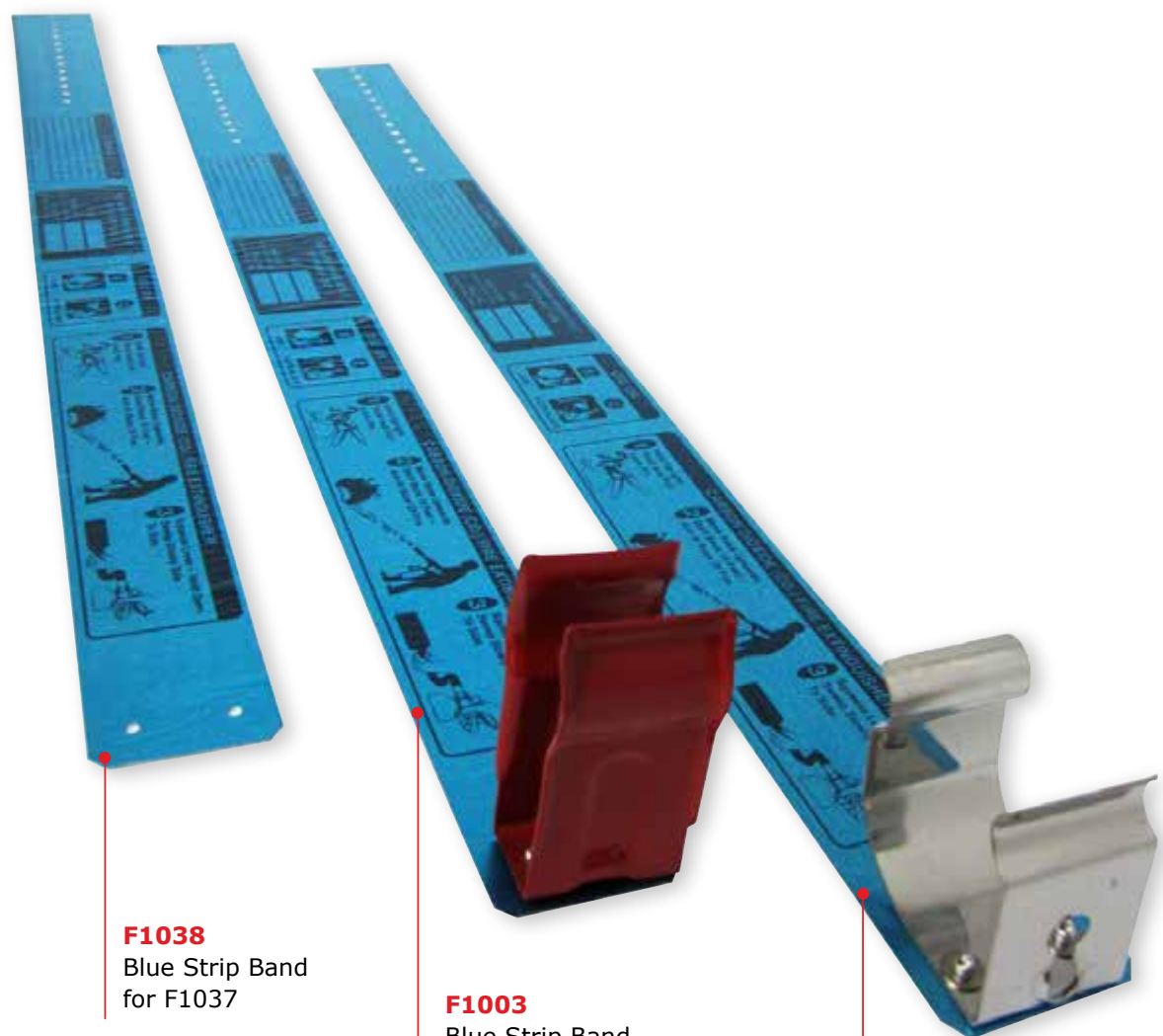


F1008
Universal Hose Clip

F1037
CO2 Stainless Steel Clip

F1033
Rapid Discharge Hose Clip
Powder Coated Red

REPLACEMENT BANDS & CLIPS



F1038
Blue Strip Band
for F1037

F1003
Blue Strip Band
W/ Red Powder Coated Clip
for Rapid Discharge Horns

F1002
Blue Strip Band W/ S.S. Clip
for Conical Discharge Horns



F1133RK
Red Locking Cabinet Kit



F1133WK
White Locking Cabinet Kit



F11322
Plexi Glass
Replacement Window



F11321
S.S. Bracket Hammer Holder



F1131R
Red Hammer

RUBBER & BRUSHES



F1041
Rubber Handle



F1083SS
Stainless Steel Bristle
Brush - Black Handle

F1083N
White Nylon Bristle
Brush - Black Handle

F1083B
Black Bristle Brush
Black Handle

F1083
Small Black Bristle Brush
Black Handle



F11240
Rubber Blow-Off Cap
HIGHER

F1124
Rubber Blow-Off Cap

HORNS



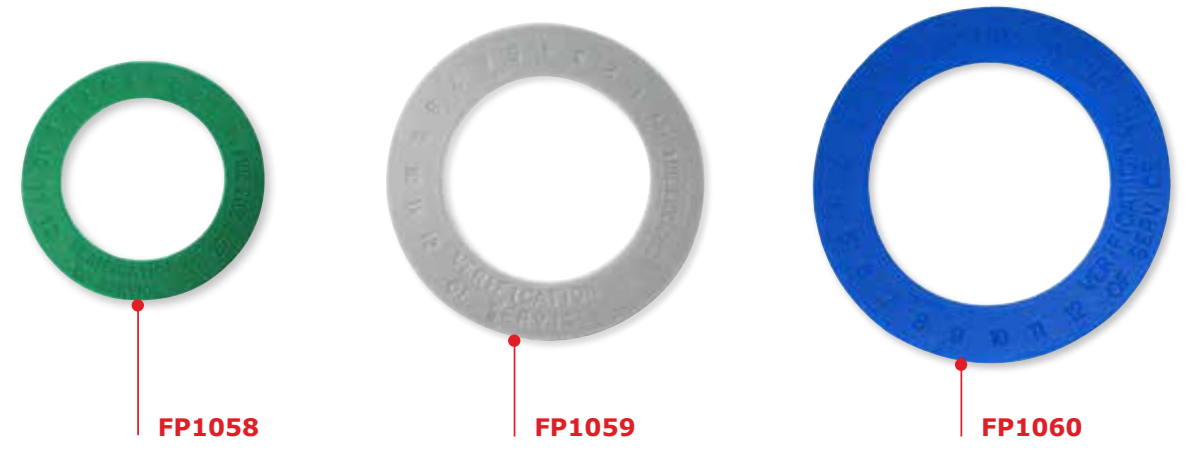
F1004
Conical Horn &
Nozzle Assy 10 lb.

F1005
Conical Horn &
Nozzle Assy 15 - 20 lb.

F1007
Rapid Discharge Horn
& Handle Assy 10 lb.

F1006
Rapid Discharge Horn
& Handle Assy 15 - 20 lb.

SERVICE COLLARS



FP1058

FP1059

FP1060

FOIL NOZZLE SEALS



F1123
Foil Nozzle Seals
10 per pack

PULL PINS



F1009
Pull Pin STANDARD

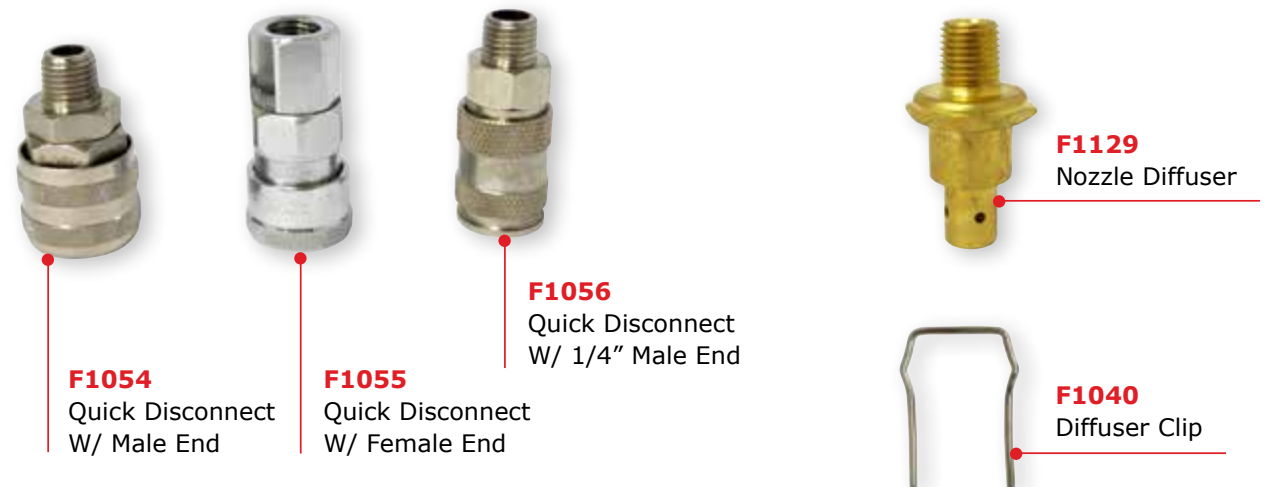


Q780
SMALL Lock W/ 3 Keys

Q782
LARGE Lock W/ 3 Keys

Q783
MEDIUM Lock W/ 3 Keys

MISCELLANEOUS



F1054
Quick Disconnect
W/ Male End

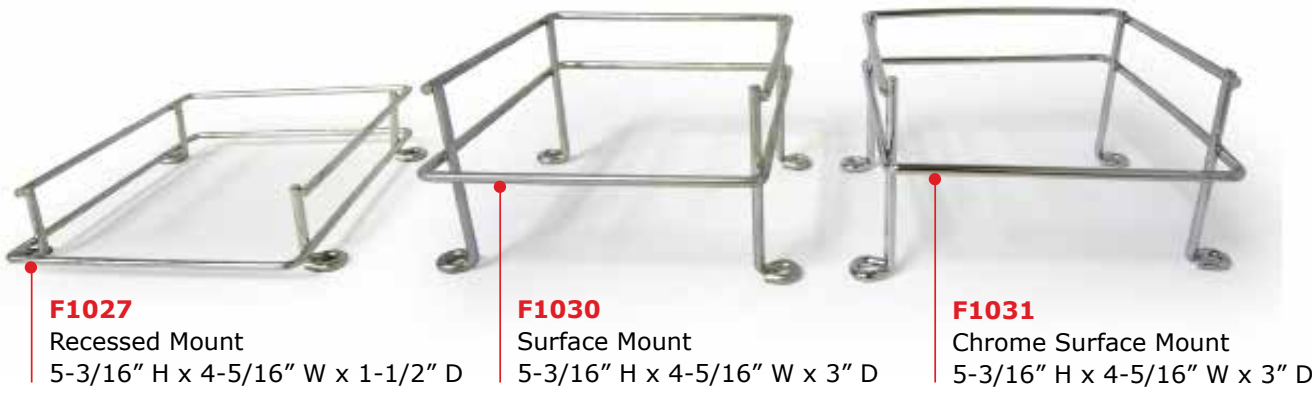
F1055
Quick Disconnect
W/ Female End

F1056
Quick Disconnect
W/ 1/4" Male End

F1129
Nozzle Diffuser

F1040
Diffuser Clip

AIR BLOW GUN KITS



F1027
Recessed Mount
5-3/16" H x 4-5/16" W x 1-1/2" D

F1030
Surface Mount
5-3/16" H x 4-5/16" W x 3" D

F1031
Chrome Surface Mount
5-3/16" H x 4-5/16" W x 3" D



F1043
1/4"ID x 25"
Industrial Re-Coil Air Hose

F1044
1/4"ID x 12"
Industrial Re-Coil Air Hose

PULL STATION GUARDS



F1021
Recessed Mount
5" Dia., 1-1/2" D

F1026
Surface Mount
5" Dia., 3" D



F1022
Chrome Recessed Mount
5" Dia., 1-1/2" D

F1029
Chrome Surface Mount
5" Dia., 3" D



F1049
Hose Kit Including
1/4"ID x 25" Hose
W/ Gun & 1 Nozzle

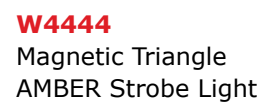


F1051
Air Blow Gun
W/ 1 Nozzle

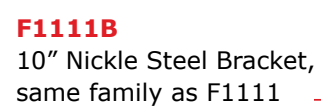
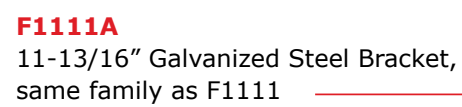
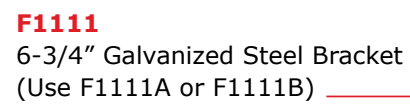


F1050
Air Blow Gun Kit Deluxe
W/ 12" Hose, Snap-In "T"
& 1 Nozzle

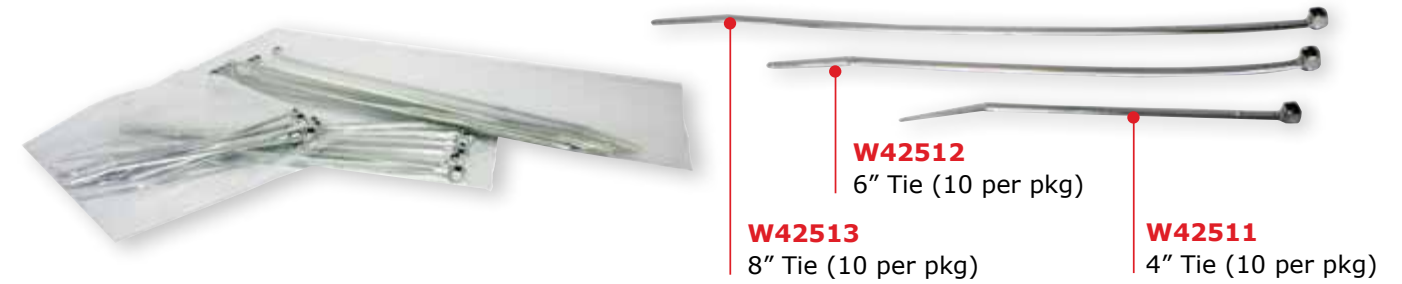
CHEMICAL VALVE STEMS



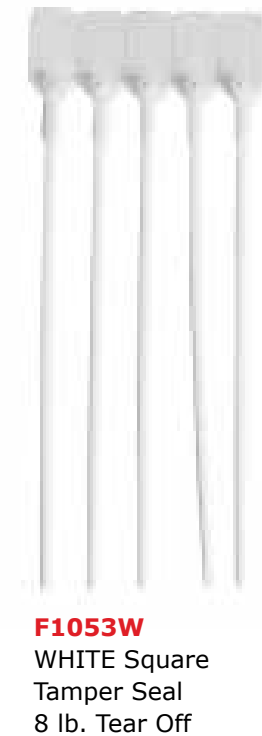
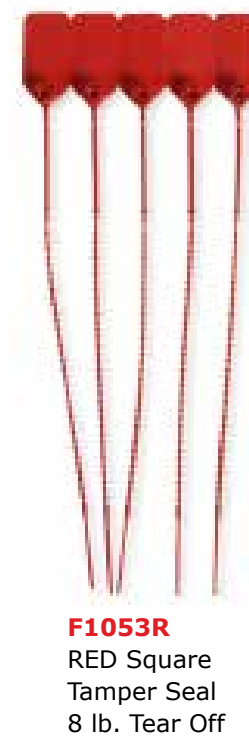
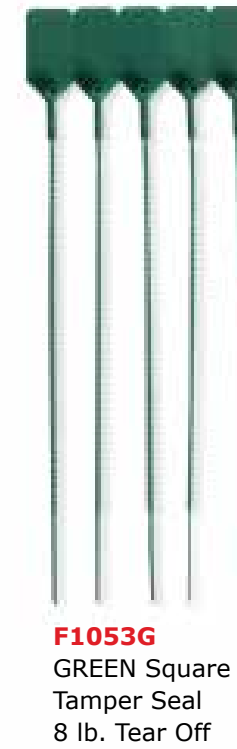
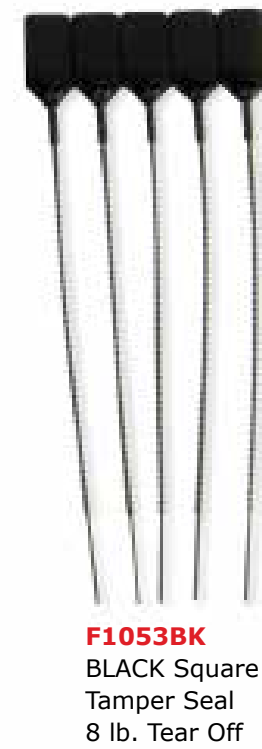
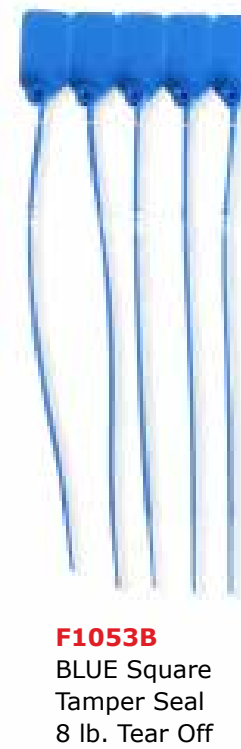
FUSIBLE LINK BRACKETS



CHROME ZIP TIES



TAMPER SEALS



WESTFIRE